

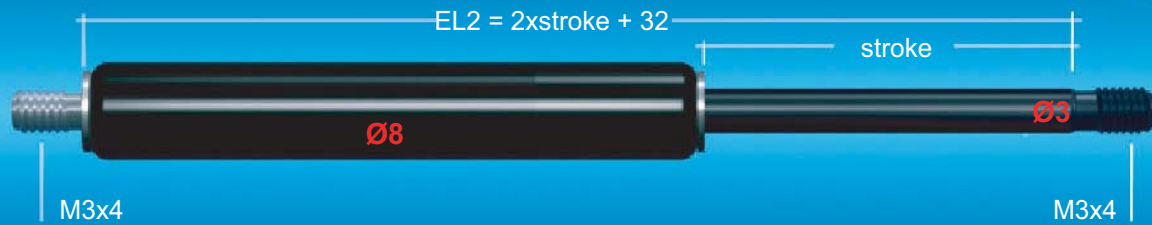
Bansbach



easylift

THE WORLD OF MOTION

Quick Ship



Size 3/8

Extension force: 10 - 100N

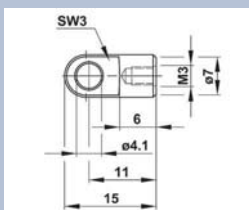
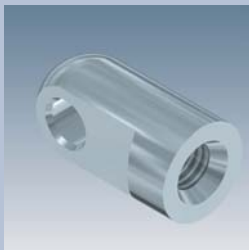
stroke	extended length (EL2)	part number	force [N]
20	72	QS-08-020	10 - 100 N In case of an order, it is essential to mention
30	92	QS-08-030	
40	112	QS-08-040	
50	132	QS-08-050	
60	152	QS-08-060	
80	192	QS-08-080	

Technical information:

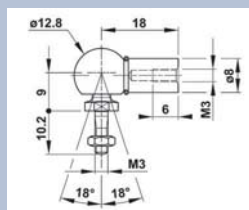
- Shipment within 3 working days upon receipt of your order
- The extension force must be indicated on the order
- Connecting parts, if chosen, will be enclosed
- Material:
Piston rod: CeramPro®-coated
Cylinder: brass
- Normal speed and end damping
- You will find general information and technical details in our main catalogue
- You will find customized gas springs in our main catalogue

Optional connecting parts

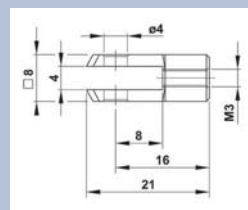
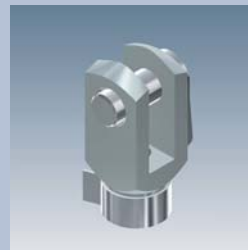
Hinge eye
Q1



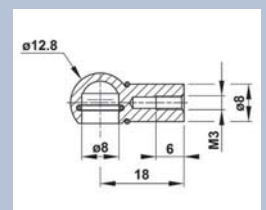
Elbow joints
Q3



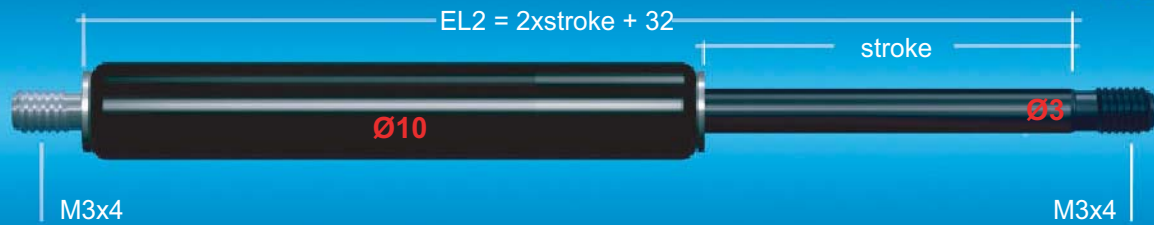
Clevis
Q5



Ball socket
Q6



Technische Änderungen und Druckfehler vorbehalten. The flyer is subject to technical alterations and printing mistakes.



Size 3/10

Extension force: 10 - 100N

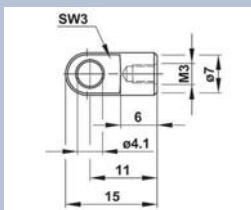
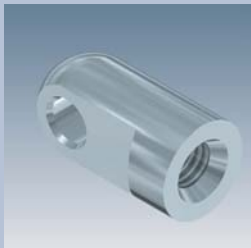
stroke	extended length (EL2)	part number	force [N]
20	72	QS-10-020	10 - 100 N In case of an order, it is essential to mention
30	92	QS-10-030	
40	112	QS-10-040	
50	132	QS-10-050	
60	152	QS-10-060	
80	192	QS-10-080	

Technical information:

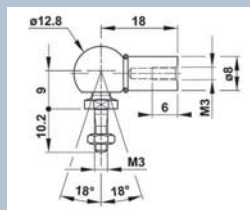
- Shipment within 3 working days upon receipt of your order
- The extension force must be indicated on the order
- Connecting parts, if chosen, will be enclosed
- Material:
Piston rod: CeramPro®-coated
Cylinder: powder-coated black
- Normal speed and end damping
- You will find general information and technical details in our main catalogue
- You will find customized gas springs in our main catalogue

Optional connecting parts

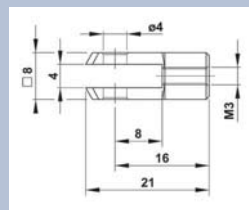
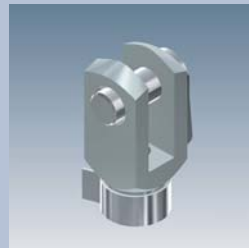
Hinge eye
Q1



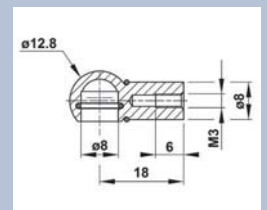
Elbow joint
Q3



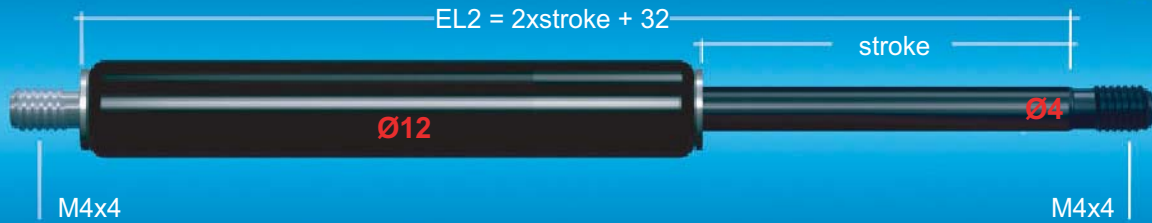
Clevis
Q5



Ball socket
Q6



Technische Änderungen und Druckfehler vorbehalten. The flyer is subject to technical alterations and printing mistakes.



Size 4/12

Extension force: 10 - 180N

stroke	extended length (EL2)	part number	force [N]
20	72	QS-08-020	10 - 180 N In case of an order, it is essential to mention
30	92	QS-08-030	
40	112	QS-08-040	
50	132	QS-08-050	
60	152	QS-08-060	
80	192	QS-08-080	
100	232	QS-08-100	
120	272	QS-08-120	
150	332	QS-08-150	

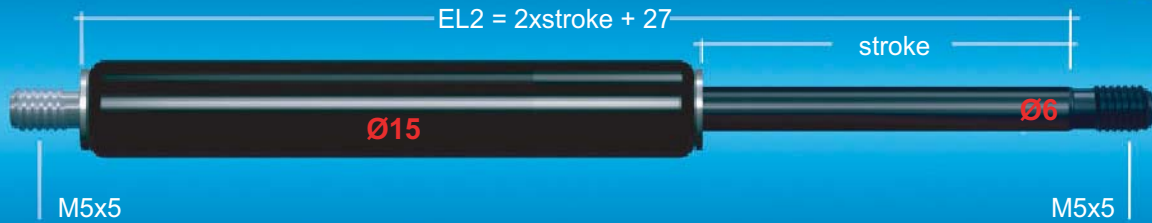
Technical information:

- If we receive the order by 12 am, shipment will be on the next working day
- The extension force must be indicated on the order
- The Bansbach 4/12 Quick Ship gas springs include a valve
- Connecting parts, if chosen, will be enclosed
- Material:
Piston rod: CeramPro®-coated
Cylinder: powder-coated black
- Normal speed and end damping
- You will find general information and technical details in our main catalogue
- You will find customized gas springs in our main catalogue

Optional connecting parts

Hing eye S1	Elbow joint F4	Clevis N4	Hinge heads R6	Ball socket F5

Technische Änderungen und Druckfehler vorbehalten. The flyer is subject to technical alterations and printing mistakes.



Size 6/15

Extension force: 20 - 400N

stroke	extended length (EL2)	part number	force [N]
20	67	QS-15-020	20 - 400 N
40	107	QS-15-040	In case of an order, it is essential to mention
50	127	QS-15-050	
60	147	QS-15-060	
80	187	QS-15-080	
100	227	QS-15-100	
120	267	QS-15-120	
150	327	QS-15-150	
200	427	QS-15-200	

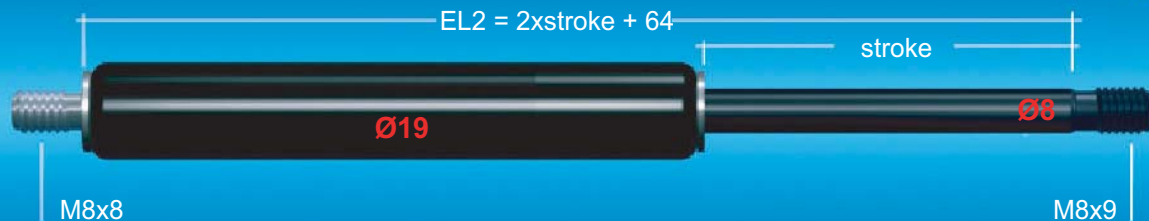
Technical information:

- If we receive the order by 12 am, shipment will be on the next working day
- The extension force must be indicated on the order
- The Bansbach 6/15 Quick Ship gas springs include a valve
- Connecting parts, if chosen, will be enclosed
- Material:
Piston rod: CeramPro®-coated
Cylinder: powder-coated black
- normal speed and end damping
- You will find general information and technical details in our main catalogue
- You will find customized gas springs in our main catalogue

Optional connecting parts

Hinge eye S2	Elbow joint B3	Clevis G5	Hinge head R7	Ball joint B6	Ball socket J3

Technische Änderungen und Druckfehler vorbehalten. The flyer is subject to technical alterations and printing mistakes.



Size 8/19

Extension force: 50 - 700N

stroke	extended length (EL2)	part number	force [N]
50	164	QS-19-050	50 - 700 N
100	264	QS-19-100	In case of an order, it is essential to mention
150	364	QS-19-150	
200	464	QS-19-200	
250	564	QS-19-250	
300	664	QS-19-300	

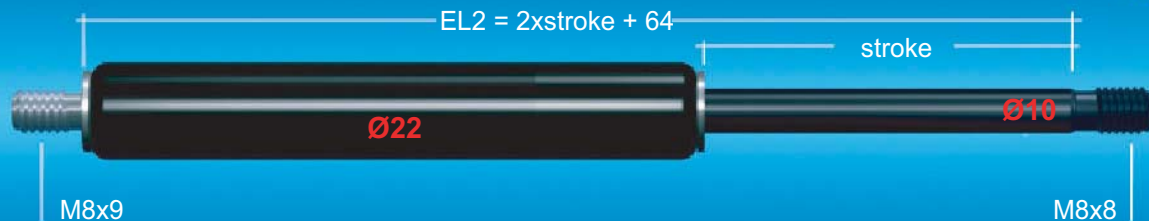
Technical information:

- If we receive the order by 12 am, shipment will be on the next working day
- The extension force must be indicated on the order
- The Bansbach 8/19 Quick Ship gas springs include a valve
- Connecting parts, if chosen, will be enclosed
- Material:
Piston rod: CeramPro®-coated
Cylinder: powder-coated black
- Slow speed, strong end damping
- You will find general information and technical details in our main catalogue
- You will find customized gas springs in our main catalogue

Optional connecting parts

Hinge eye S3	Elbow joint A3	Clevis C5	Hinge head A7	Ball joint B6	Ball socket P3

Technische Änderungen und Druckfehler vorbehalten. The flyer is subject to technical alterations and printing mistakes.



Size 10/22

Extension force: 80 - 1.300N

stroke	extended length (EL2)	part number	force [N]
50	164	QS-22-050	80 - 1.300 N In case of an order, it is essential to mention
100	264	QS-22-100	
150	364	QS-22-150	
200	464	QS-22-200	
250	564	QS-22-250	
300	664	QS-22-300	
350	764	QS-22-350	
400	864	QS-22-400	
450	964	QS-22-450	
500	1064	QS-22-500	
550	1164	QS-22-550	
600	1264	QS-22-600	
650	1364	QS-22-650	
700	1464	QS-22-700	

Technical information:

- If we receive the order by 12 am, shipment will be on the next working day
- The extension force must be indicated on the order
- The Bansbach 10/22 Quick Ship gas springs include a valve
- Connecting parts, if chosen, will be enclosed
- Material:
Piston rod: CeramPro®-coated
Cylinder: powder-coated black
- Slow speed, strong end damping
- You will find general information and technical details in our main catalogue
- You will find customized gas springs in our main catalogue

Optional connecting parts

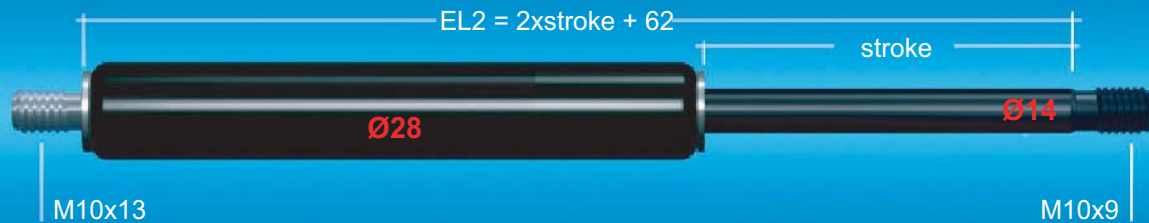
Hinge eye S3	Elbow joint A3	Clevis C5	Hinge head A7	Ball joint B6	Ball socket P3

Technische Änderungen und Druckfehler vorbehalten. The flyer is subject to technical alterations and printing mistakes.

Bansbach easylift GmbH
Barbarossastraße 8
D-73547 Lorch

Tel. +49 (0) 7172/9107-0
Fax +49 (0) 7172/9107-44

info@bansbach.de
www.bansbach.de



Size 14/28

Extension force: 150 - 2.500N

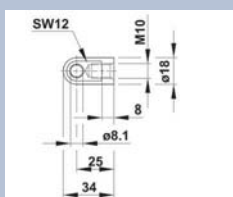
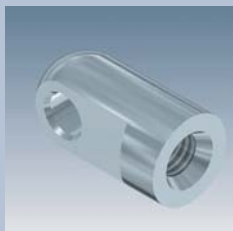
stroke	extended length (EL2)	part number	force [N]
100	262	QS-28-100	150 - 2.500 N In case of an order, it is essential to mention
150	362	QS-28-150	
200	462	QS-28-200	
250	562	QS-28-250	
300	662	QS-28-300	
350	762	QS-28-350	
400	862	QS-28-400	
450	962	QS-28-450	
500	1062	QS-28-500	
550	1162	QS-28-550	
600	1262	QS-28-600	
650	1362	QS-28-650	
700	1462	QS-28-700	
750	1562	QS-28-750	

Technical information:

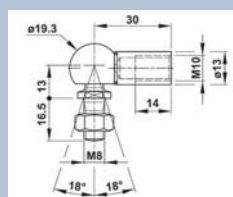
- If we receive the order by 12 am, shipment will be on the next working day
- The extension force must be indicated on the order
- The Bansbach 14/28 Quick Ship gas springs include a valve
- Connecting parts, if chosen, will be enclosed
- Material:
Piston rod: CeramPro®-coated
Cylinder: powder-coated black
- Slow speed, strong end damping
- You will find general information and technical details in our main catalogue
- You will find customized gas springs in our main catalogue

Optional connecting parts

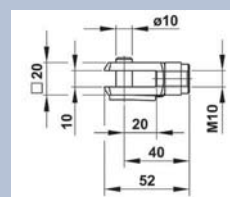
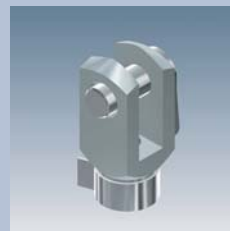
Hinge eye
S4



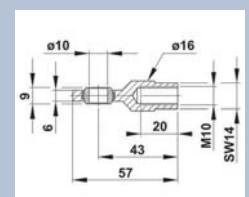
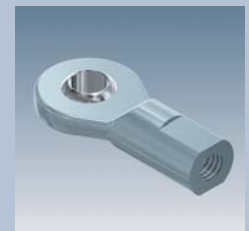
Elbow joint
A4



Clevis
D9



Hinge head
A8



Technische Änderungen und Druckfehler vorbehalten. The flyer is subject to technical alterations and printing mistakes.

Bansbach easylift GmbH
Barbarossastraße 8
D-73547 Lorch

Tel. +49 (0) 7172/9107-0
Fax +49 (0) 7172/9107-44

info@bansbach.de
www.bansbach.de



Size 20/40

Extension force: 500 - 5.000N

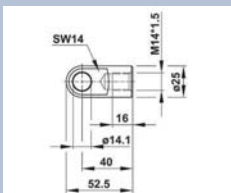
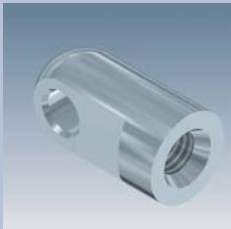
stroke	extended length (EL2)	part number	force [N]
100	317	QS-40-100	500 - 5.000 N In case of an order, it is essential to mention
150	417	QS-40-150	
200	517	QS-40-200	
300	717	QS-40-300	
400	917	QS-40-400	
500	1117	QS-40-500	
600	1317	QS-40-600	
800	1717	QS-40-800	
1000	2117	QS-40-1000	

Technical information:

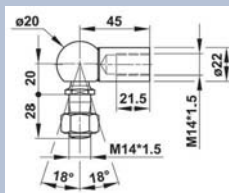
- If we receive the order by 12 am, shipment will be on the next working day
- The extension force must be indicated on the order
- The Bansbach 20/40 Quick Ship gas springs include a valve
- Connecting parts, if chosen, will be enclosed
- Material:
Piston rod: CeramPro®-coated
Cylinder: powder-coated black
- Slow speed, strong end damping
- You will find general information and technical details in our main catalogue
- You will find customized gas springs in our main catalogue

Optional connecting parts

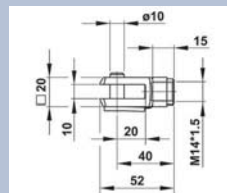
Hinge eye
S5



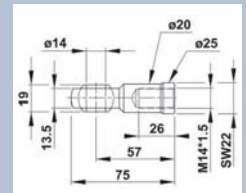
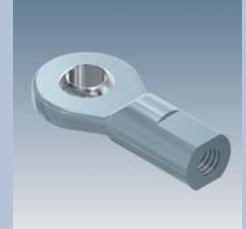
Elbow joint
B4



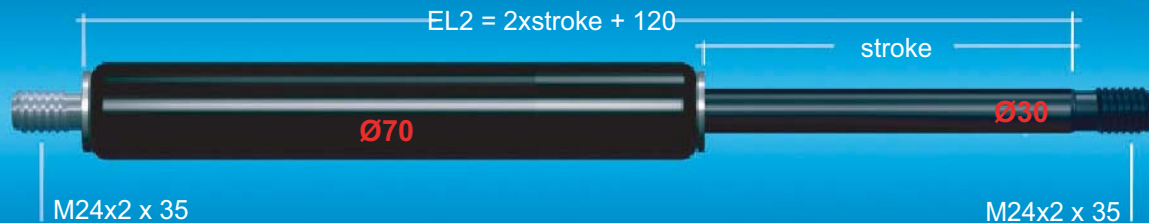
Clevis
D9



Hinge head
C8



Technische Änderungen und Druckfehler vorbehalten. The flyer is subject to technical alterations and printing mistakes.



Size 30/70

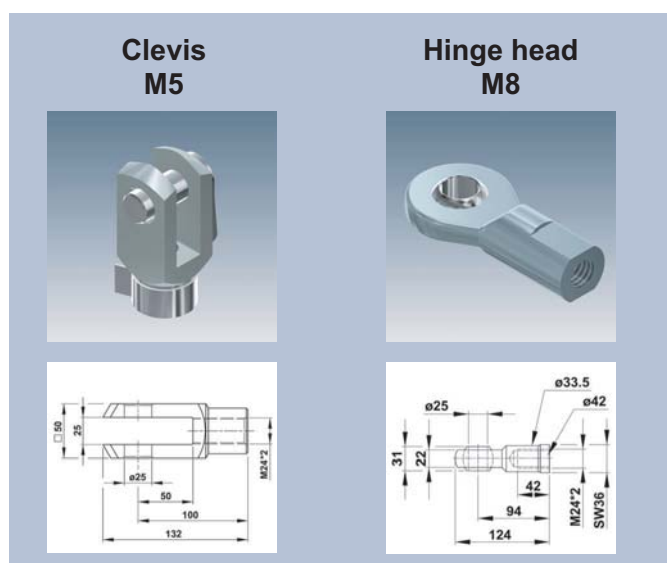
Extension force: 2.000 - 13.000N

stroke	extended length (EL2)	part number	force [N]
100	320	QS-70-100	2.000 - 13.000 N In case of an order, it is essential to mention
200	520	QS-70-200	
300	720	QS-70-300	
400	920	QS-70-400	
500	1120	QS-70-500	
600	1320	QS-70-600	
700	1520	QS-70-700	
800	1720	QS-70-800	

Technical information:

- Shipment within 5 working days upon receipt of your order
- The extension force must be indicated on the order
- The Bansbach 30/70 Quick Ship gas springs include a valve
- Connecting parts, if chosen, will be enclosed
- Material:
Piston rod: hardchromed
Cylinder: powder-coated black
- Normal speed and end damping
- You will find general information and technical details in our main catalogue
- You will find customized gas springs in our main catalogue

Optional connecting parts



Technische Änderungen und Druckfehler vorbehalten. The flyer is subject to technical alterations and printing mistakes.